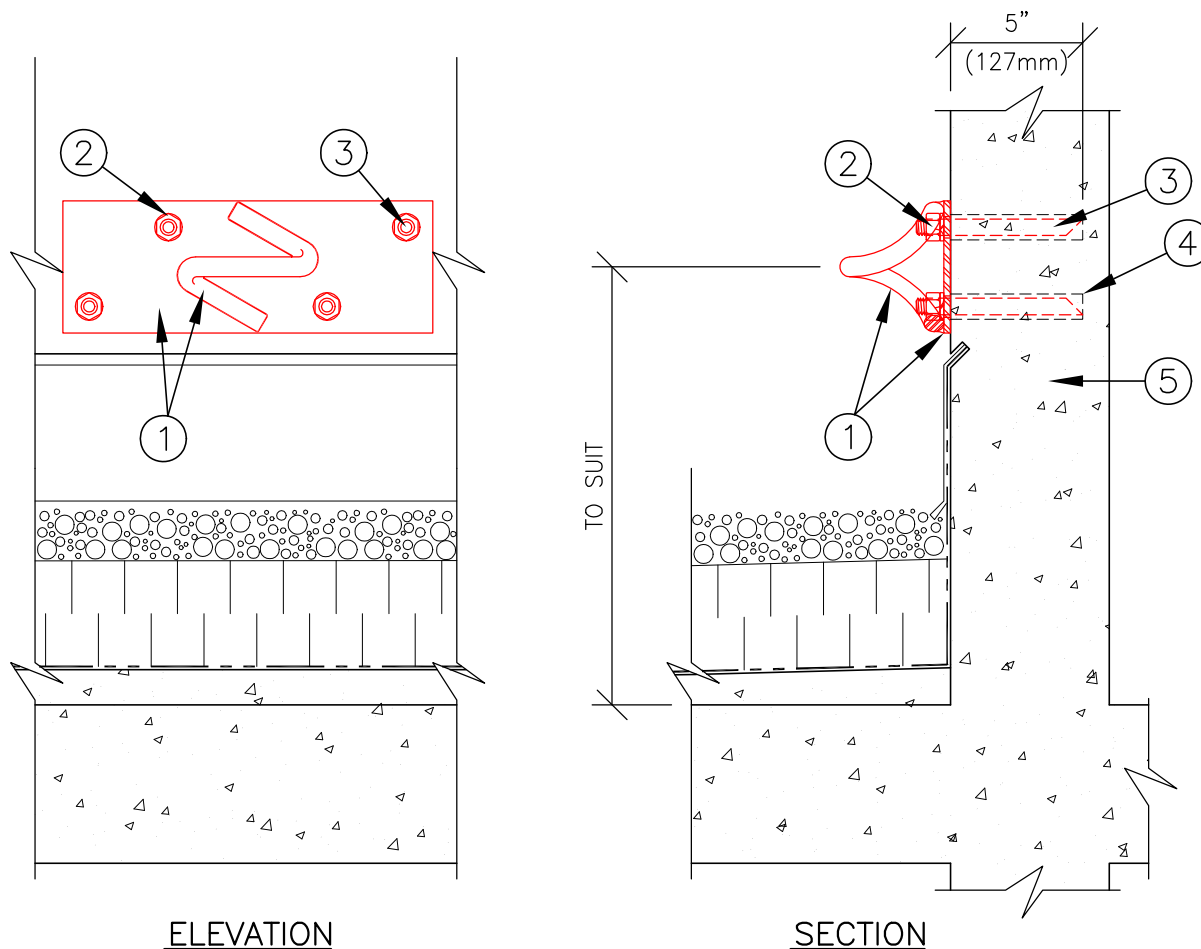


▷ - TYPE A, GENERIC DETAIL FOR STAINLESS STEEL

SPIRAL "ADHESIVE" WALL ANCHOR (4-BOLT)

MODEL # ASA-7100-4



ATLAS ANCHOR SYSTEMS

DESCRIPTION:

1. STAINLESS STEEL SPIRAL LOOP WELDED TO STAINLESS STEEL PLATE.
2. FOUR STAINLESS STEEL HEX NUTS & LOCK WASHERS.
3. FOUR STAINLESS STEEL 5/8" (16mm) DIA. ROD INSERTS.
4. HILTI HVU M-16x125 ADHESIVE CAPSULE TO EACH INSERT (RECOMMENDED).
5. REINFORCED CONCRETE STRUCTURE.

BASIC CODE REQUIREMENTS:

1. RATED SAFE WORKING LOAD 1,000lbs. (4.4kN) AND AN ULTIMATE LOAD 5,000lbs. (22kN) WITHOUT FAILURE IN ANY DIRECTION (CAL.O.S.H.A.).
2. MEETS THE CURRENT REQUIREMENTS OF CAN/C.S.A STANDARD Z91-02.
3. MEETS THE CURRENT REQUIREMENTS OF FEDERAL O.S.H.A. STANDARD 1910.66.

Note: This document does not, in whole nor in part, constitute any direction or instruction to any contractor with regard to construction means, methods, or techniques.

Note: This document does not constitute any direction or instruction to any contractor to proceed from the owner/client. The owner/client exclusively shall be liable for any payments properly due to any contractor.