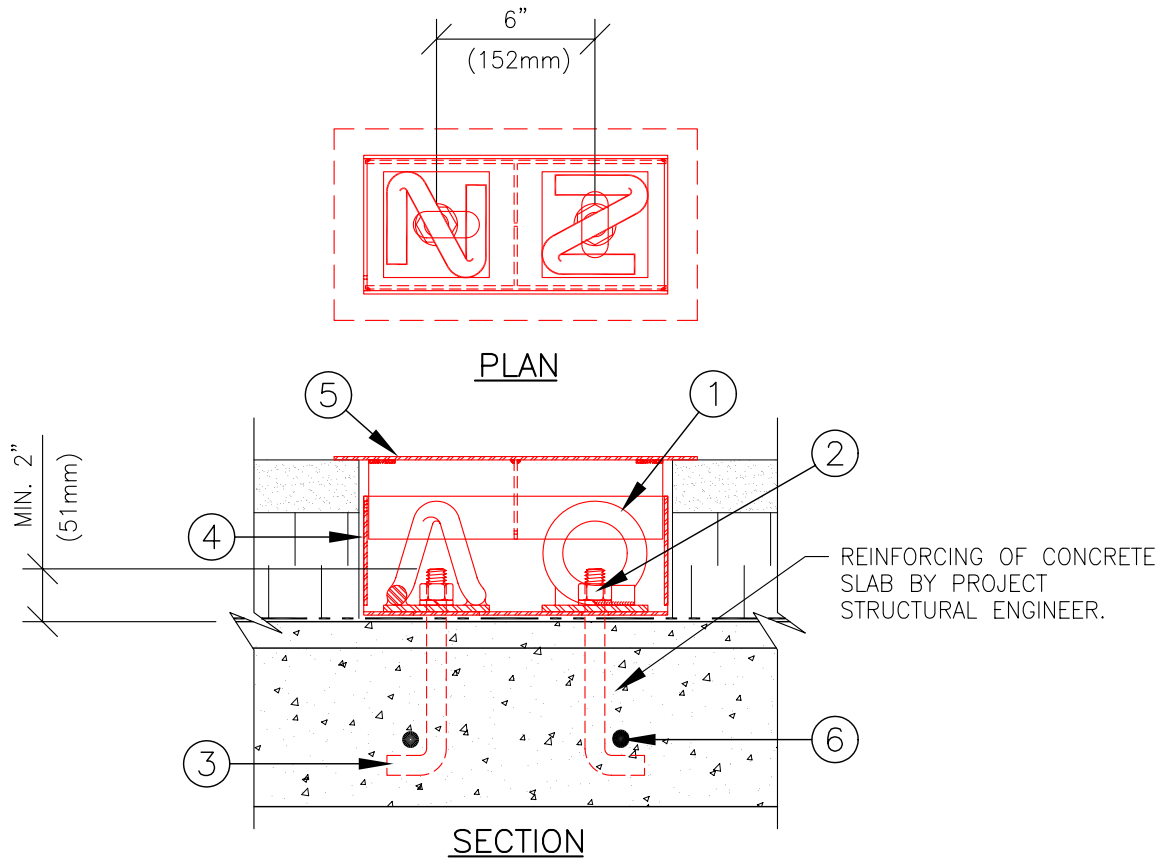


Note: This document does not, in whole or in part, constitute any direction or instruction to any contractor with regard to construction means, methods or techniques.

Note: This document does not constitute any direction or instruction to any contractor to proceed from the owner/client. The owner/client exclusively shall be liable for any payments properly due to any contractor.

NN - TYPE A, GENERIC DETAIL FOR STAINLESS STEEL SPIRAL "POUR-IN-PLACE" FLUSH DECK ANCHORS (DUAL) MODEL # ASP-8100-1F(D)



ATLAS ANCHOR SYSTEMS

DESCRIPTION:

1. STAINLESS STEEL SPIRAL LOOP WELDED TO STAINLESS STEEL PLATE.
2. STAINLESS STEEL HEX NUT & LOCK WASHER.
3. STAINLESS STEEL THREADED L-BOLT 3/4" (19mm) DIA. x LENGTH (L).
4. ALUMINUM BOX C/W DRAIN OPENINGS.
5. ALUMINUM COVER C/W CABLE TIE.
6. 10M MIN. HORIZONTAL REBAR, EXTENDED 2' (610mm) EACH WAY (BY OTHERS) AND TIED TO REINFORCING OR AS DETERMINED BY PROJECT STRUCTURAL ENGINEER.

BASIC CODE REQUIREMENTS:

1. RATED SAFE WORKING LOAD 1,000lbs. (4.4kN) AND AN ULTIMATE LOAD 5,000lbs. (22kN) WITHOUT FAILURE IN ANY DIRECTION (CAL.O.S.H.A.).
2. MEETS THE CURRENT REQUIREMENTS OF CAN/C.S.A STANDARD Z91-02.
3. MEETS THE CURRENT REQUIREMENTS OF FEDERAL O.S.H.A. STANDARD 1910.66.