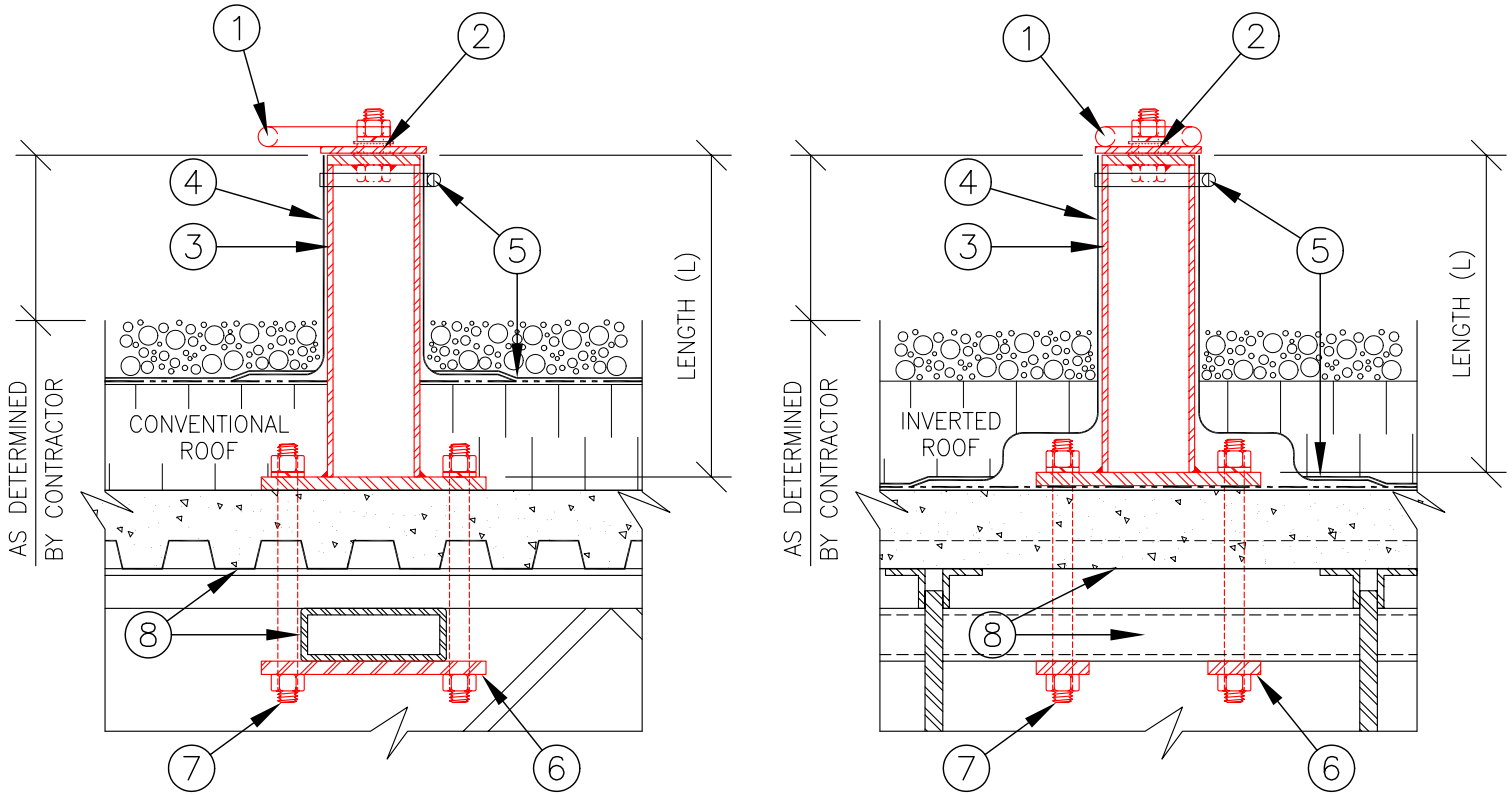


○ - TYPE C, GENERIC DETAIL FOR STAINLESS STEEL

ROTATABLE HEAD, "THRU-BOLT" PEDESTAL ROOF ANCHOR

ATLAS' MODEL # CST-4100-4R



ATLAS ANCHOR SYSTEMS

DESCRIPTION:

1. ROTATABLE ANCHOR HEAD (360 DEGREES) – STAINLESS STEEL "C" LOOP WELDED TO STAINLESS STEEL PLATE; OPTIONAL STAINLESS STEEL SPIRAL ANCHOR HEAD.
2. STAINLESS STEEL SWIVEL ASSEMBLY.
3. SCHEDULE 40 PIPE, 3.5" O.D. x LENGTH TO SUIT & STEEL SEAT PLATE WELDED TO PIPE PEDESTAL. PIPE PEDESTAL WELDED ONTO STEEL BASE PLATE WITH HOLES THEN HOT DIPPED GALVANIZED.
4. FLASHING (BY OTHERS).
5. SEALING AROUND (BY OTHERS).
6. STEEL BACK PLATE WITH HOLES.
7. FOUR STAINLESS STEEL RODS WITH HEX NUTS AND LOCK WASHERS.
8. REINFORCING OF EXISTING STRUCTURE AS DETERMINED BY ENGINEER.

BASIC CODE REQUIREMENTS:

1. RATED SAFE WORKING LOAD 1,000lbs. (4.4kN) AND AN ULTIMATE LOAD 5,000lbs. (22kN) WITHOUT FAILURE IN ANY DIRECTION (CAL.O.S.H.A.).
2. MEETS THE CURRENT REQUIREMENTS OF CAN/C.S.A STANDARD Z91-02.
3. MEETS THE CURRENT REQUIREMENTS OF FEDERAL O.S.H.A. STANDARD 1910.66.

Note: This document does not, in whole nor in part, constitute any direction nor instruction to any contractor with regard to construction means, methods, or techniques.

Note: This document does not constitute any direction or instruction to any contractor to proceed from the owner/client. The owner/client exclusively shall be liable for any payments properly due to any contractor.