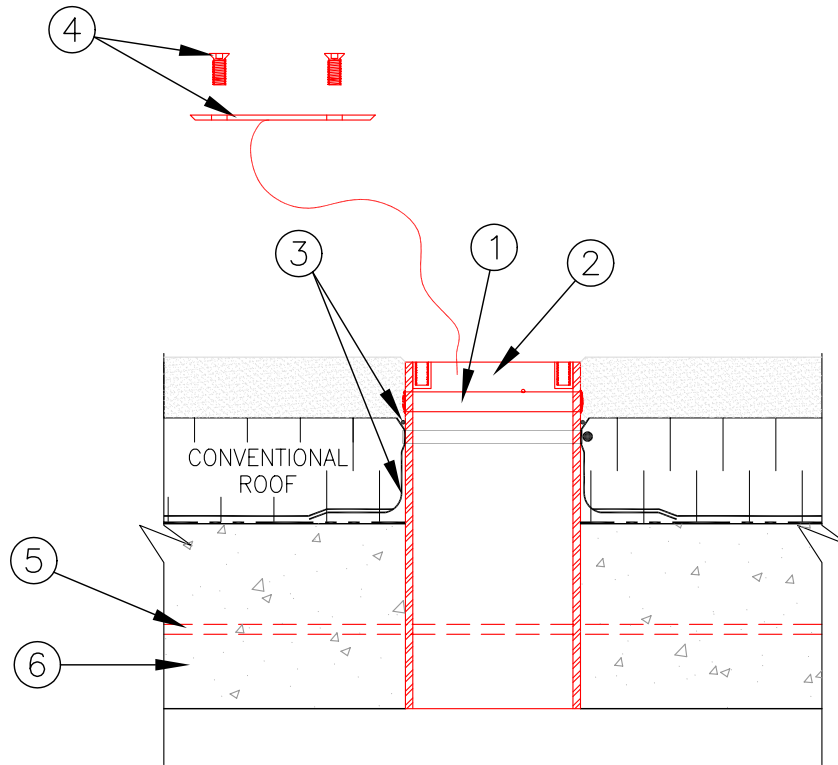


- TYPE H, GENERIC DETAIL FOR GALVANIZED

"POUR-IN-PLACE" FLUSH DECK HOLE SLEEVE

MODEL # HSP-6100-2F



ATLAS ANCHOR SYSTEMS

DESCRIPTION:

1. WELDED ANCHOR POINT.
2. GALVANIZED 'POUR-IN-PLACE' HOLE SLEEVE PIPE.
3. CLAMP FLASHING SEALING BY OTHERS.
4. ALUMINUM CAP AND FASTENERS.
5. 2 x 10 M BARS WELDED TO SIDES OF HOLE SLEEVE.
6. REINFORCED CONCRETE STRUCTURE.

BASIC CODE REQUIREMENTS:

1. RATED SAFE WORKING LOAD 1,000lbs. (4.4kN) AND AN ULTIMATE LOAD 5,000lbs. (22kN) WITHOUT FAILURE IN ANY DIRECTION (CAL.O.S.H.A.).
2. MEETS THE CURRENT REQUIREMENTS OF CAN/C.S.A STANDARD Z91-02.
3. MEETS THE CURRENT REQUIREMENTS OF FEDERAL O.S.H.A. STANDARD 1910.66.

Note: This document does not, in whole nor in part, constitute any direction or instruction to any contractor with regard to construction means, methods, or techniques.

Note: This document does not constitute any direction or instruction to any contractor to proceed from the owner/client. The owner/client exclusively shall be liable for any payments properly due to any contractor.