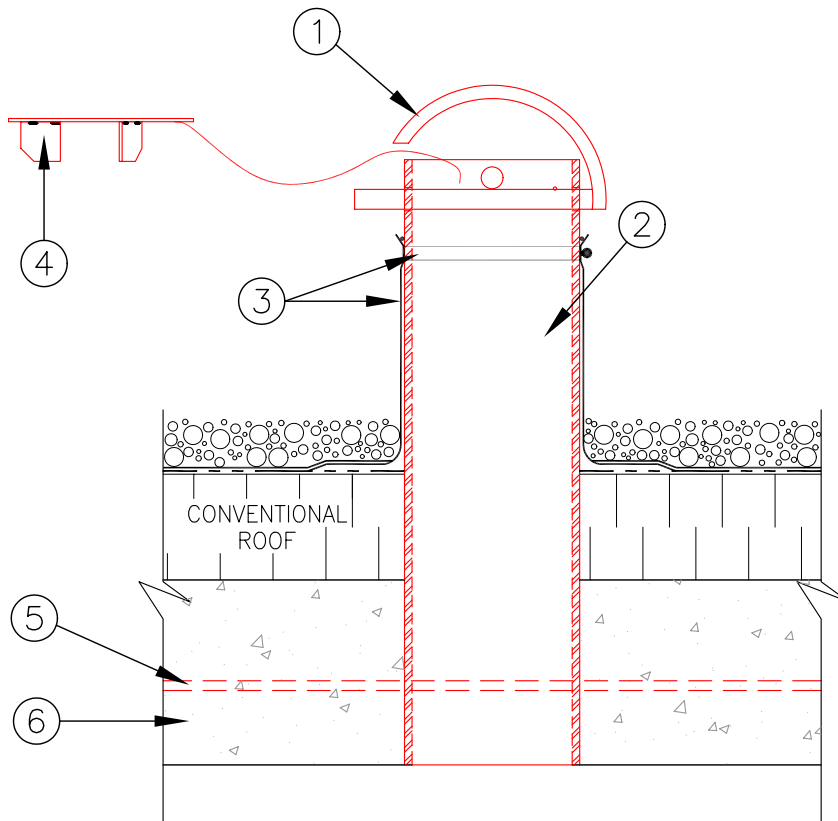




- TYPE H, GENERIC DETAIL FOR GALVANIZED

"POUR-IN-PLACE" HOLE SLEEVE (DUAL e-Bar)

MODEL # HSP-6100-2R(D)



ATLAS ANCHOR SYSTEMS

DESCRIPTION:

1. PORTABLE e-Bar ANCHOR POINT (OPTIONAL).
2. GALVANIZED 'POUR-IN-PLACE' HOLE SLEEVE PIPE.
3. FLASHING AND SEALING BY OTHERS.
4. ALUMINUM CAP (OPTIONAL).
5. 2 x 10 M BARS WELDED TO SIDES OF HOLE SLEEVE.
6. REINFORCED CONCRETE STRUCTURE.

BASIC CODE REQUIREMENTS:

1. RATED SAFE WORKING LOAD 1,000lbs. (4.4kN) AND AN ULTIMATE LOAD 5,000lbs. (22kN) WITHOUT FAILURE IN ANY DIRECTION (CAL.O.S.H.A.).
2. MEETS BASIC REQUIREMENTS OF CAN/C.S.A STANDARD Z91-02.
3. MEETS BASIC REQUIREMENTS OF FEDERAL O.S.H.A. STANDARDS.

Note: This document does not, in whole nor in part, constitute any direction or instruction to any contractor with regard to construction means, methods, or techniques.

Note: This document does not constitute any direction or instruction to any contractor to proceed from the owner/client. The owner/client exclusively shall be liable for any payments properly due to any contractor.