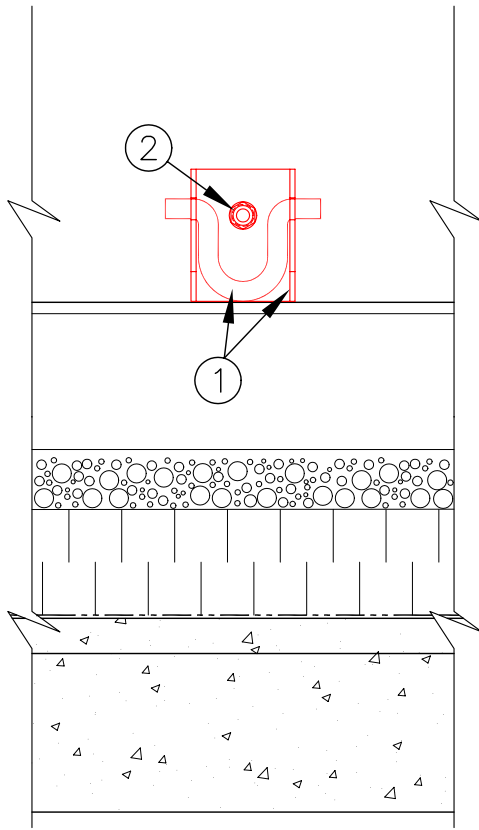




# - TYPE A, GENERIC DETAIL FOR STAINLESS STEEL

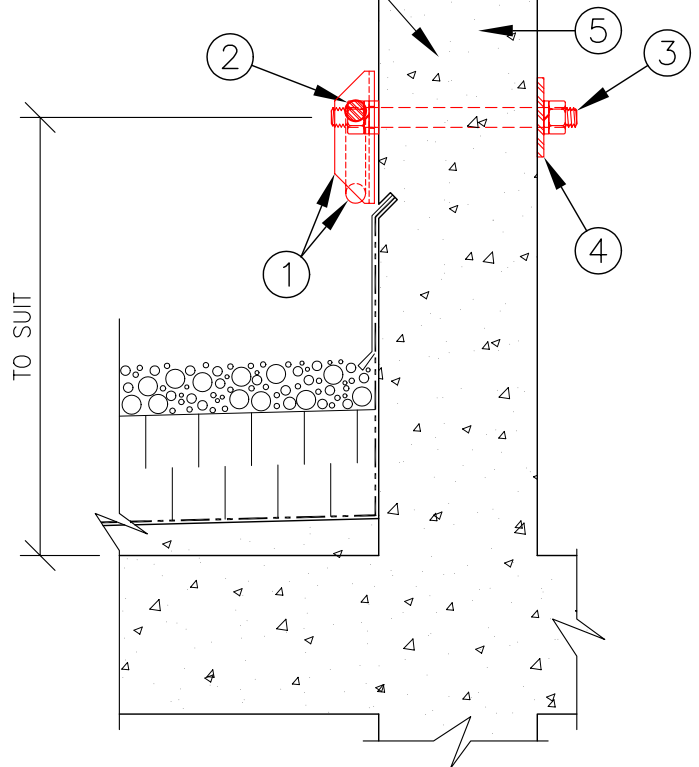
## ROTATABLE "THRU-BOLT" LOW-PROFILE WALL ANCHOR

### MODEL # LST-5100-1W



ELEVATION

REINFORCING OF CONCRETE WALL, SLAB AND WALL TO SLAB CONNECTION BY PROJECT STRUCTURAL ENGINEER.



SECTION

## ATLAS ANCHOR SYSTEMS

### DESCRIPTION:

1. STAINLESS STEEL LOW PROFILE LOOP CONNECTED TO STAINLESS STEEL FRAME.
2. STAINLESS STEEL HEX NUT & ROTATING ASSEMBLY.
3. STAINLESS STEEL ROD 3/4" (19mm) DIA. x LENGTH WITH LOCK WASHER AND HEX NUT.
4. STAINLESS STEEL BACK PLATE WITH HOLE.
5. REINFORCED CONCRETE STRUCTURE.

### BASIC CODE REQUIREMENTS:

1. RATED SAFE WORKING LOAD 1,000lbs. (4.4kN) AND AN ULTIMATE LOAD 5,000lbs. (22kN) WITHOUT FAILURE IN ANY DIRECTION (CAL.O.S.H.A.).
2. MEETS THE CURRENT REQUIREMENTS OF CAN/C.S.A STANDARD Z91-02.
3. MEETS THE CURRENT REQUIREMENTS OF FEDERAL O.S.H.A. STANDARD 1910.66.

Note: This document does not, in whole nor in part, constitute any direction or instruction to any contractor with regard to construction means, methods, or techniques.

Note: This document does not constitute any direction or instruction to any contractor to proceed from the owner/client. The owner/client exclusively shall be liable for any payments properly due to any contractor.